

BAKER HUGHES



TEMPERATURE LOG GAMMA RAY LOG

Baker Atlas

FILE NO: 15229	COMPANY WELL 78-36
API NO: 27-001-80426	FIELD FALLON 1
	COUNTY CHURCHILL
	STATE NEVADA

Ver. 3.87	LOCATION: 358338 E, 4359640 N MDN UTM ZONE 11N, NAD 83	OTHER SERVICES RPV
SEC 38	TWP 18N	RGE 29E

PERMANENT DATUM LOG MEASURED FROM DRILL MEAS. FROM	G.L. _____ ELEVATION 3915 FT G.L. _____ 0 FT ABOVE P.D. G.L. _____	ELEVATIONS: KB DF OL 3915 FT
--	--	---------------------------------------

DATE	18-AUG-2010
RUN	1
SERVICE ORDER	587372
DEPTH DRILLER	5509 FT
DEPTH LOGGER	NOT TAGGED
BOTTOM LOGGED INTERVAL	3500 FT
TOP LOGGED INTERVAL	200 FT
TIME STARTED	16:00
TIME FINISHED	20:30
OPERATOR RIG TIME	4.5 HOURS
TYPE OF FLUID IN HOLE	WEIGHTED GEL MUD
FLUID DENSITY	9.5 LB/G
FLUID SALINITY	NA
FLUID LEVEL	FULL
LOGGED COSENT TOP	NA
WELLHEAD PRESSURE	0 PSI
MAXIMUM HOLE DEVIATION	NA
NOMINAL LOGGING SPEED	28 F/MIN
MAX. RECORDED TEMP.	350 DEGF
REFERENCE LOG	NA
REFERENCE LOG DATE	NA
EQUIP. NO.	NA-4232
RECORDED BY	VERCIWAK
WITNESSED BY	N. PETERSON

IN MAKING INTERPRETATIONS OF LOGS OUR EMPLOYEES WILL GIVE CUSTOMER THE BENEFIT OF THEIR BEST JUDGEMENT. BUT SINCE ALL INTERPRETATIONS ARE OPINIONS BASED ON INFERENCES FROM ELECTRICAL OR OTHER MEASUREMENTS, WE CANNOT, AND WE DO NOT GUARANTEE THE ACCURACY OR CORRECTNESS OF ANY INTERPRETATION. WE SHALL NOT BE LIABLE OR RESPONSIBLE FOR ANY LOSS, COST, DAMAGES, OR EXPENSES WHATSOEVER INCURRED OR SUSTAINED BY THE CUSTOMER RESULTING FROM ANY INTERPRETATION MADE BY ANY OF OUR EMPLOYEES.

BOREHOLE RECORD

BIT SIZE	FROM	TO
3.03 IN	0 FT	5536 FT

CASING RECORD

SIZE	WEIGHT	GRADE	FROM	TO
10.75 IN	NA	NA	0 FT	50 FT
7.25 IN	NA	NA	0 FT	750 FT

REMARKS

RUN 1 TRIP 1 : THE WELL WAS LAST CIRCULATED ON 18-AUG-10 AT 1600 HRS, REACHED 350 DEG F AT 1850 HRS AT DEPTH OF 4580'
ATTEMPTED TO COME UP LOGGING FROM 4580', BUT TEMPERATURE EFFECT ON THE TOOL WOULD NOT ALLOW TOOL TO COMMUNICATE/MOTOR. HAD TO COME UPHOLE TO 3500' TO GET COMMS BACK AND LOGGED FROM 3300'
DOWNLOG NOT RUN AT CUSTOMER'S INSTRUCTION DUE TO HIGH TEMPERATURE

100 TO 400 DEGF MAXIMUM READING THERMOMETER READ: 348 DEGF
100 TO 400 DEGF MAXIMUM READING THERMOMETER READ: 347 DEGF

THANK YOU FOR CHOOSING BAKER ATLAS!

CREW: LAPOINT / DANKLEPSEN

RIG: ROCKET DRILLING CR #1

EQUIPMENT DATA

RUN	TRIP	TOOL	SERIES NO.	SERIAL NO.	POSITION
1	1	PCM	8250FA	10272259	FREE
1	1	PCM/CCL	8248ED	10314810	FREE
1	1	GR	8262YA	168484	FREE
1	1	RPM	8281FA	10408308	FREE
1	1	RPM	8283PA	10182586	FREE
1	1	RPM	8281FA	10081317	FREE
1	1	SRPL	8255YA	176872	FREE

MAIN LOG 2"/100FT SCALE

ECLIPS 6.01 Feb 21, 2008
Updates: 1,39,40,41,43 Patches: 1,2,4,5

Sat Aug 21 11:38:04 2010

Perpfit /main/62

Cplot

Pdf_Cpp /main/16

Fileview 5.42

PARAMETER AND FILTER SUMMARY REPORT

FILE: /data/15229/k353a201.prm
LOGGING MODE: DEPTH DIRECTION: UP
TOP DEPTH: 200.500 ft BOTTOM DEPTH: 3513.750 ft

SYMMETRIC FILTER

MEASUREMENT TYPE	PARAMETER	VALUE	UNITS	INTERVAL (ft)	
TENSION	FILTER ()	medium (1)		TOP	BOTTOM
GR	FILTER ()	medium (1)		"	"
TEMP	FILTER ()	medium (1)		"	"

PRESSURE-TEMPERATURE CORRECTION SOURCE

MEASUREMENT TYPE	PARAMETER	VALUE	UNITS	INTERVAL (ft)	
FIXED TEMPERATURE VALUE	FIXED TEMPERATURE	72.0000	degF	TOP	BOTTOM
TEMPERATURE CORR SOURCE	TPS Temp Corr Source	8221/8255 Ext Temp		"	"

CURVE DESCRIPTION REPORT

CURVE NAME	CURVE ALIAS	CREATION DATE	CURVE DESCRIPTION
F1:DTEM	DTEM	Aug 19 17:52:01 2010	DIFFERENTIAL TEMPERATURE
F1:GR	GR	Aug 19 17:52:01 2010	GAMMA RAY
F1:TEMP	TEMP	Aug 19 17:52:01 2010	TEMPERATURE
F1:TEN	TEN	Aug 19 17:52:01 2010	DIFFERENTIAL TENSION
F1:TSCP	TSCP	Aug 19 17:52:01 2010	TEMPERATURE CORRECTED PRESSURE

CURVE MEASURE POINT OFFSET

CURVE	OFFSET (ft)	CURVE	OFFSET (ft)	CURVE	OFFSET (ft)	CURVE	OFFSET (ft)
DTEM	1.75	TEMP	1.75	TSCP	2.50		
GR	23.75	TEN	0.00				

Presentation : rta4232/data/15229/GR-TEMP_2IN.pdf [2"/100' Scale]
Plot Interval : 178 - 3540 Feet

Data File 1 : F1 : rta4232/data/15229/k353a201.nff
Created On : Aug 19 17:52:01 2010
Company : VULCAN POWER COMPANY
Well : 78-36
Field : FALLON 1

GR BACKUP

TOOL STICKING

GAMMA RAY [gr]

0 150

(gAPI)

DIFF. TENSION [ten]

2400 -100

(lbf)

GR

TEN

FEET

200

300

400

500

TEMPERATURE UP

0 400

(degF)

DIFF. TEMPERATURE [dtem]

-0.5 0.5

(degF/ft)

PRESSURE [tscp]

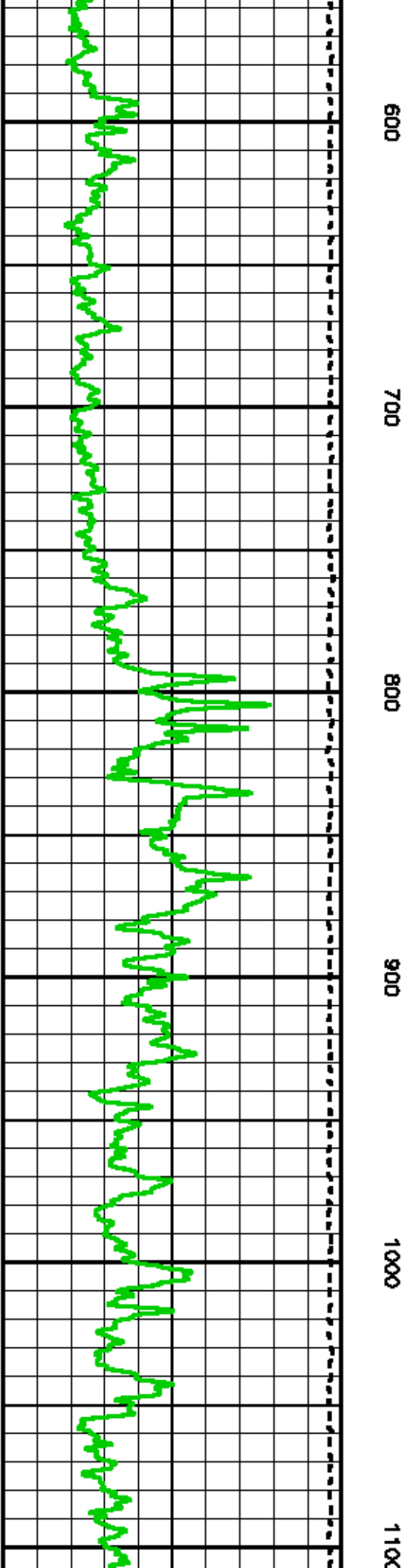
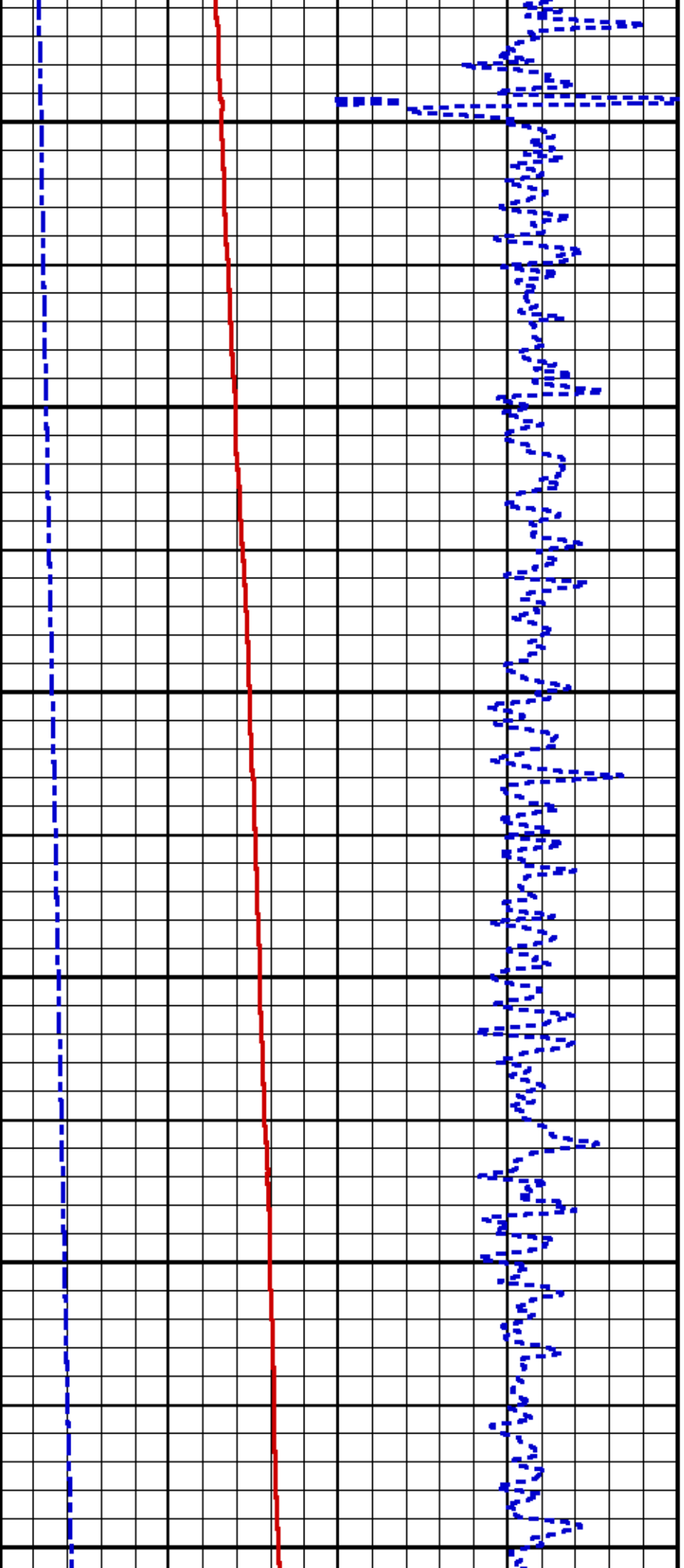
0 5000

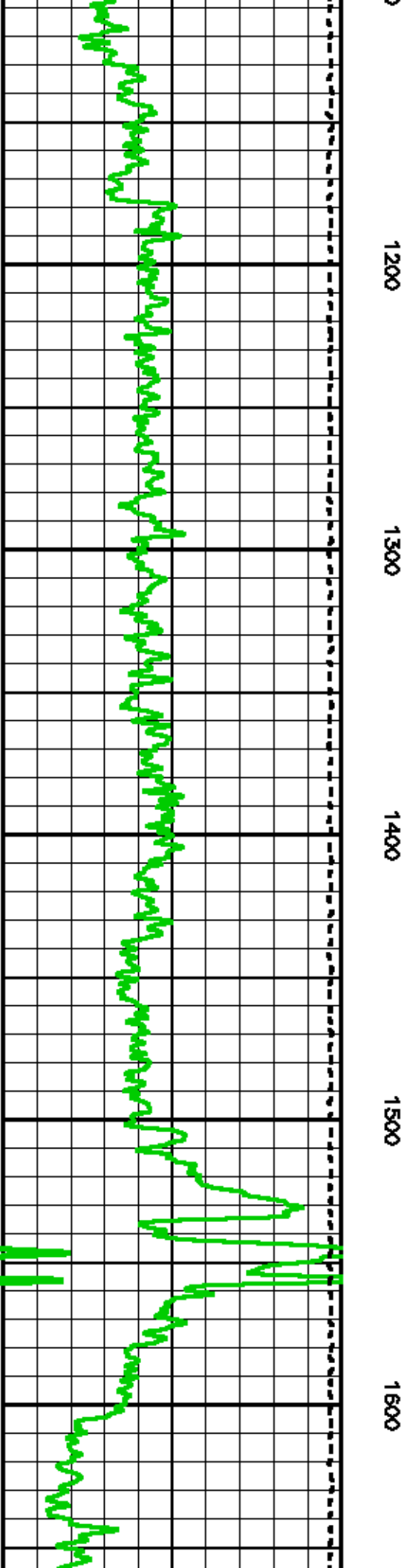
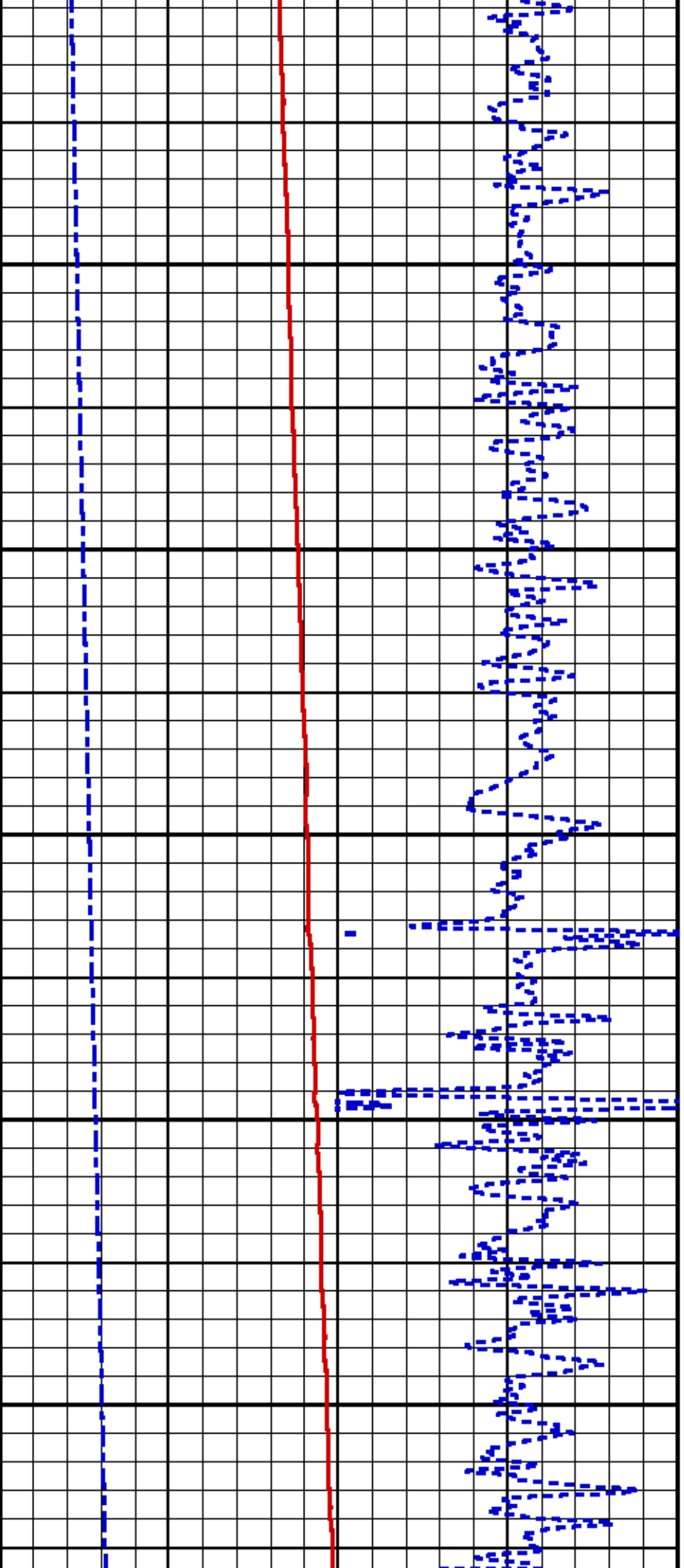
(psi)

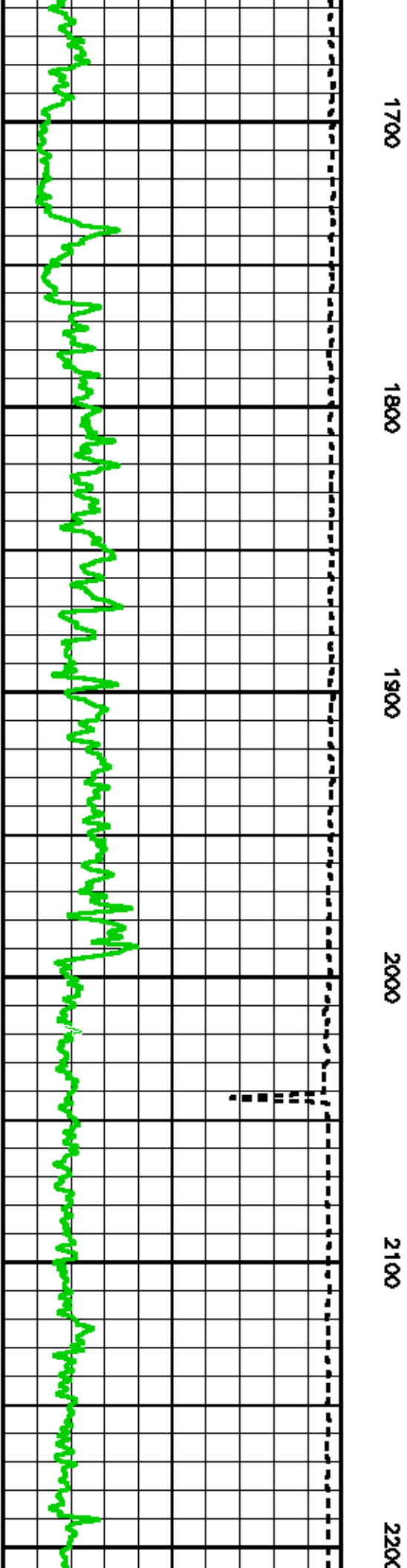
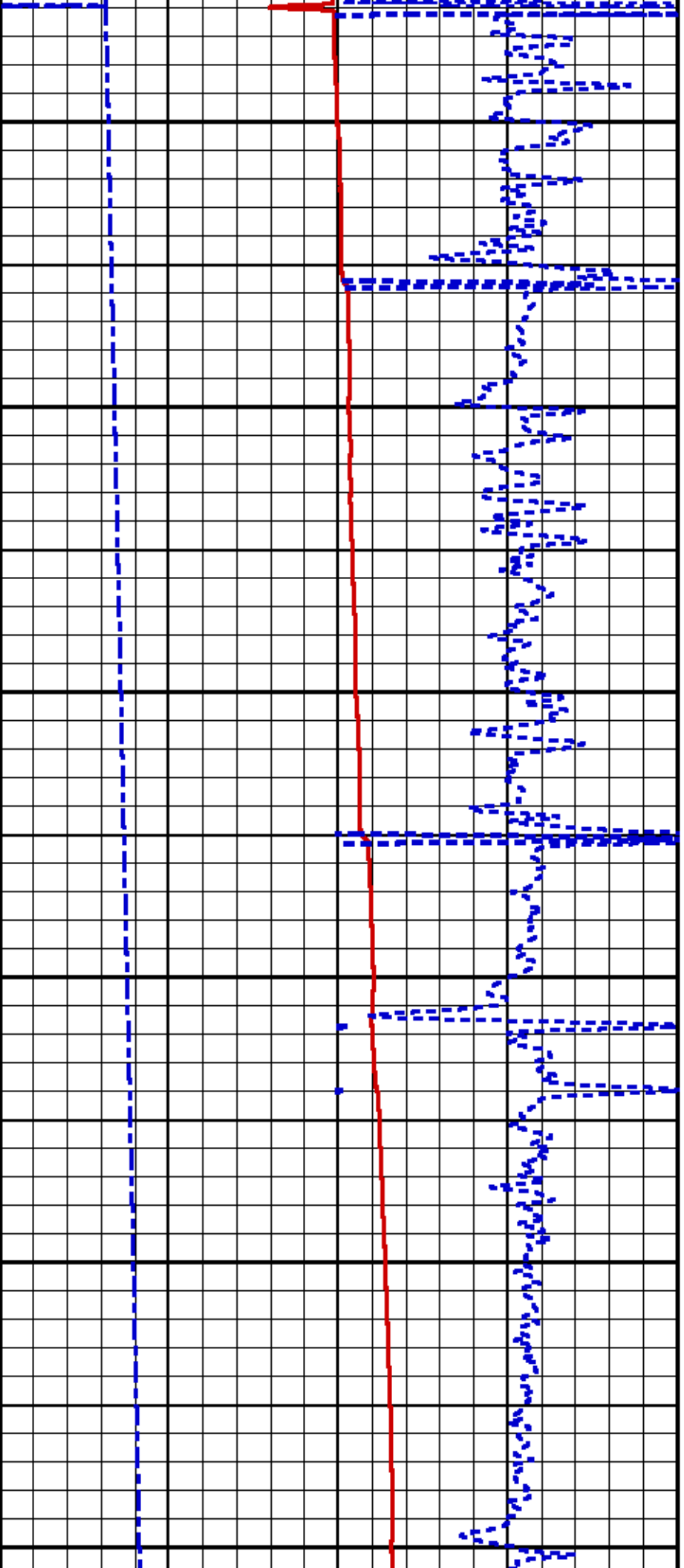
TEMP

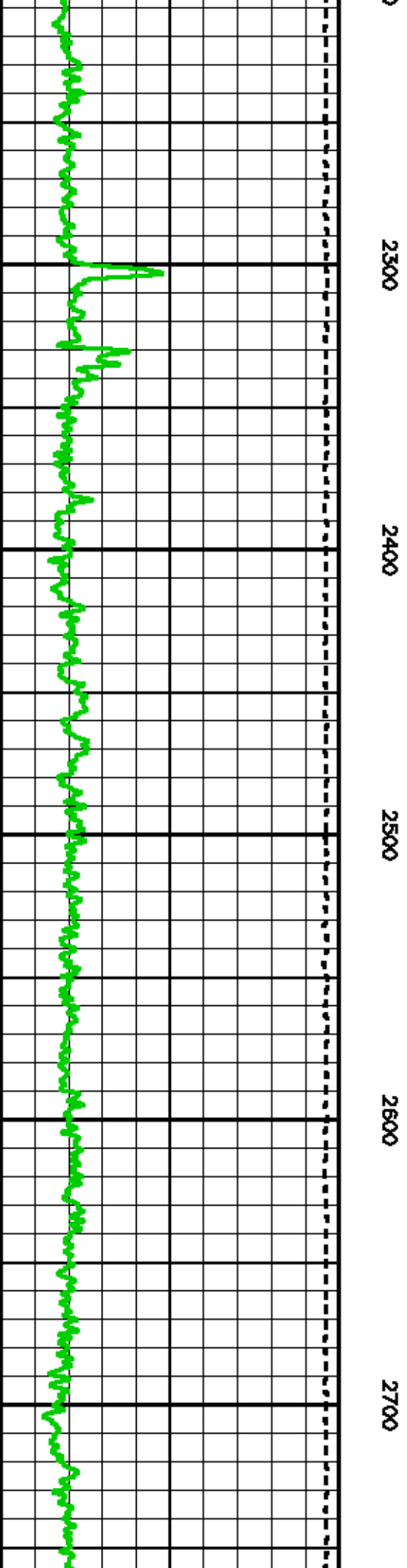
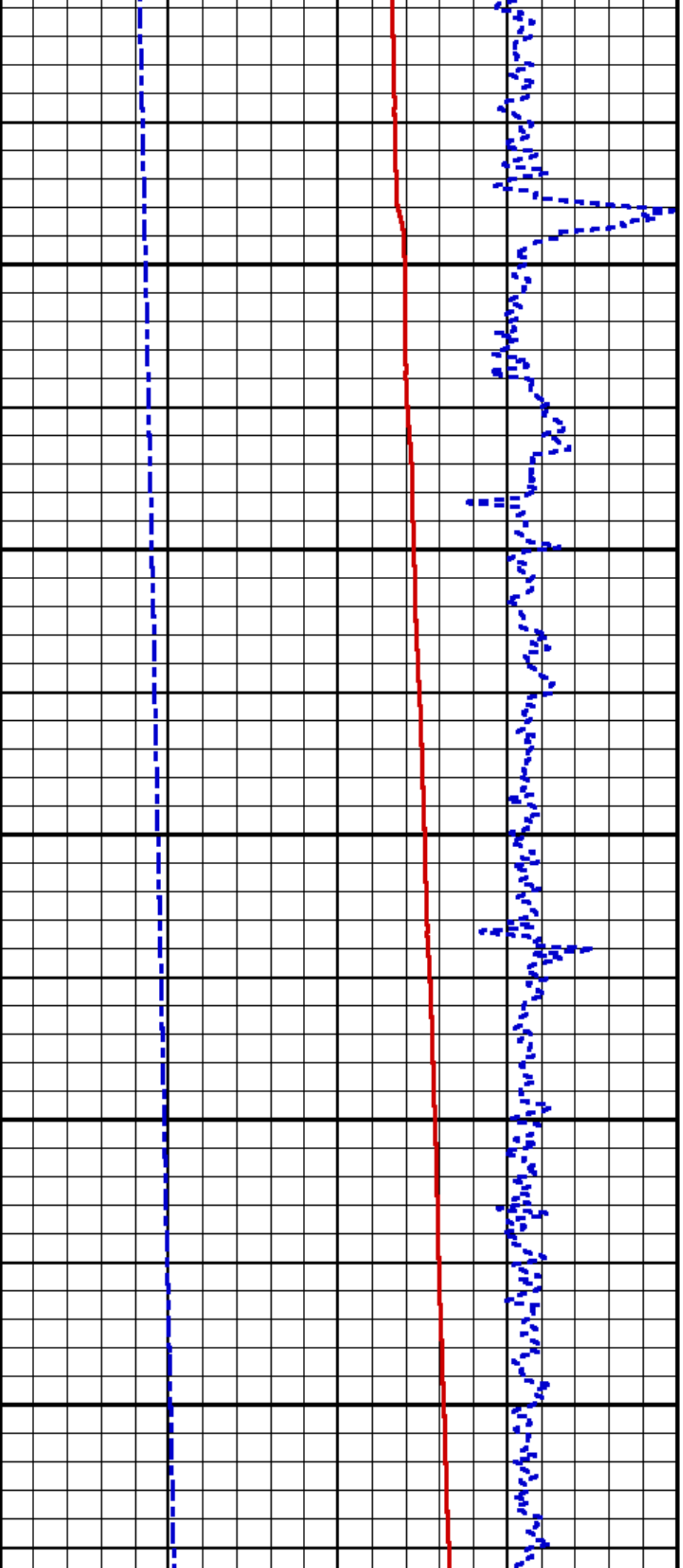
TSCP

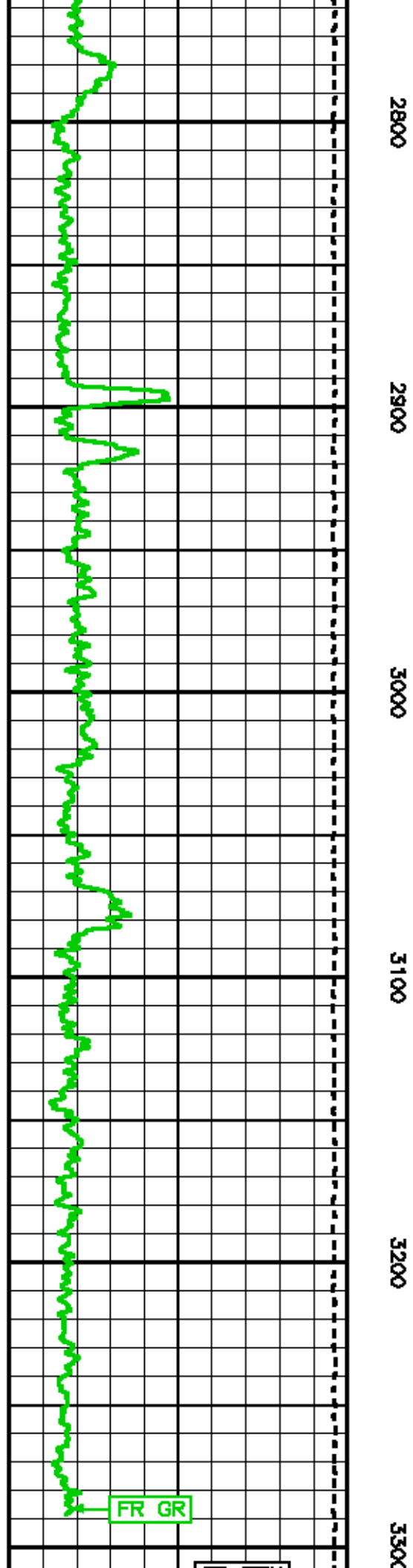
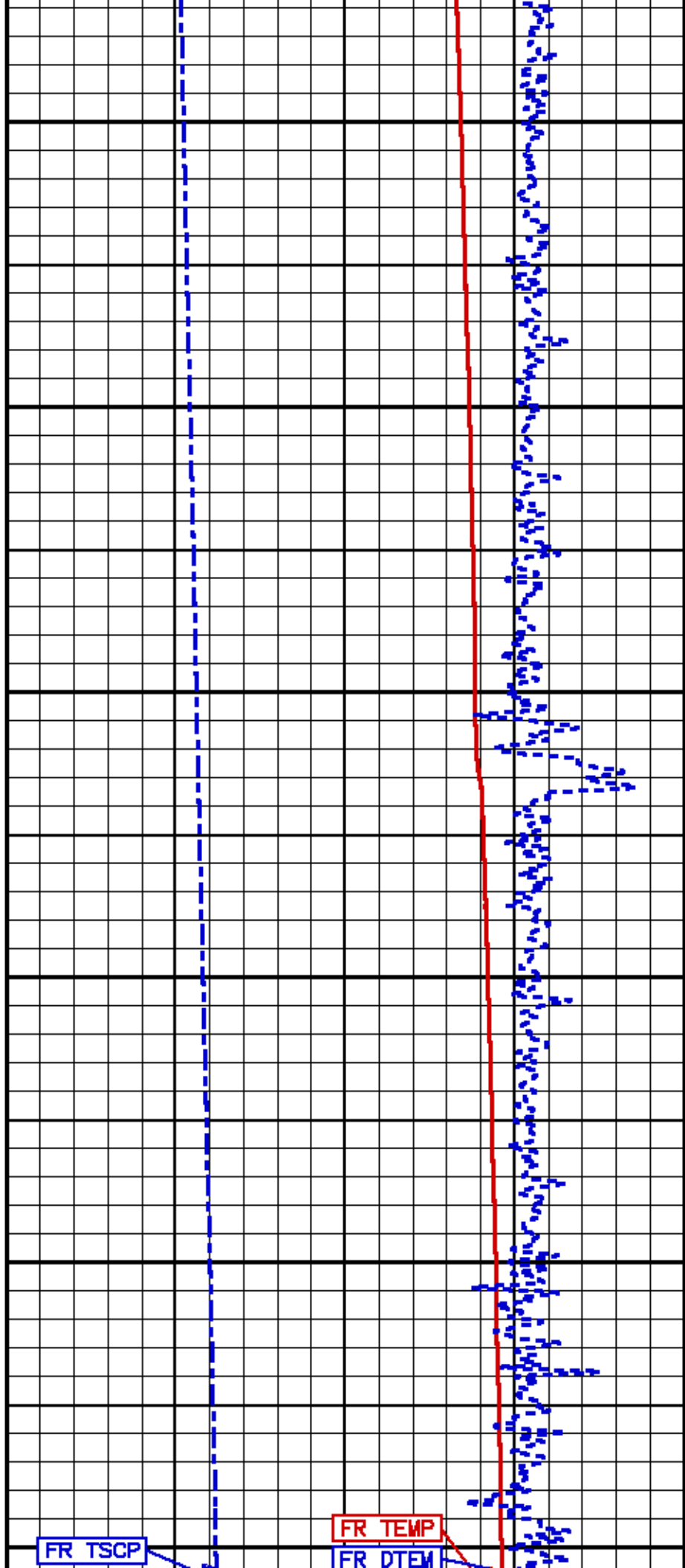
DTEM

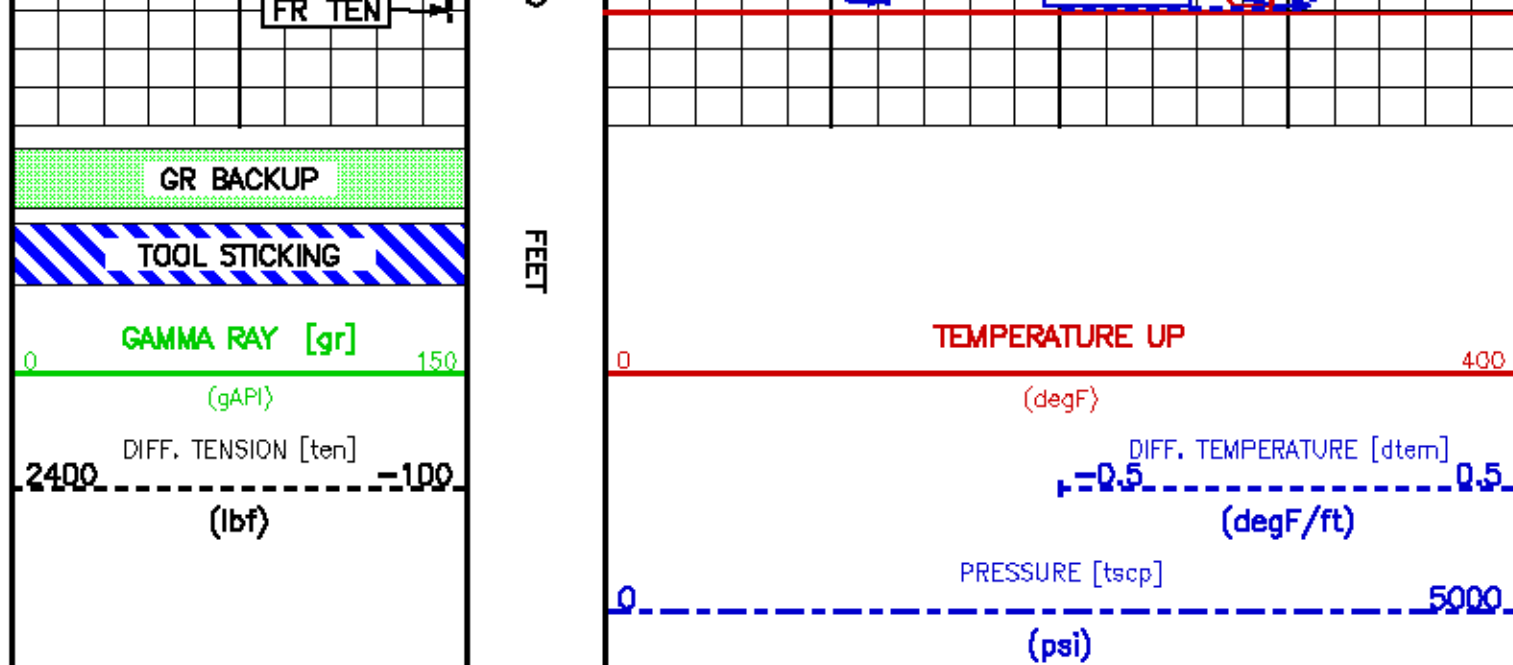












CALIBRATION / VERIFICATION SUMMARY

Source File //dall/a/15229/k355a2.txt

GR PRIMARY CALIBRATION SUMMARY

TOOL #: 8262XA 168494 DATE/TIME PERFORMED: Fri Aug 6 10:03:16 2010
 UNIT #: 3885TD ML4232 GALB JIG #: 4702NK DA-321

	BACKGROUND (cts/s)	CALBTR ON (cts/s)	CR DIFF (cts/s)	MULT	BACKGROUND (gAPI)	CALBTR ON (gAPI)	CALBTR (gAPI)
GR	111.02	464.22	353.2	0.524	58.15	243.15	185

GR PRIMARY VERIFICATION SUMMARY

TOOL #: 8262XA 168494 DATE/TIME PERFORMED: Fri Aug 6 10:08:26 2010
 UNIT #: 3885TD ML4232 VERI JIG #: 4702NK DA-321

	BACKGROUND (cts/s)	CALBTR ON (cts/s)	MULT	BACKGROUND (gAPI)	CALBTR ON (gAPI)	DIFF. (gAPI)
GR	110.60	464.11	0.524	57.93	243.09	185.16

TPSETEMP PRIMARY CALIBRATION SUMMARY

TOOL #: 8255XA 176972 DATE/TIME PERFORMED: Sat Apr 3 14:45:09 2010
 UNIT #: 3885TD ML4232

	T(0)	T(1)	T(2)	T(3)
Corr Coeff for Temp	-3.173320E+00	9.505346E-02	1.008608E-05	-1.931366E-09

TPSETEMP PRIMARY CALIBRATION SUMMARY

SYSTEM PRIMARY CALIBRATION SUMMARY

TOOL #: 8255XA 176972

DATE/TIME PERFORMED: Sat Apr 3 14:46:24 2010

UNIT #: 3885TD ML4232

T(0)

T(1)

T(2)

T(3)

Corr Coeff for Ptfb -1.587004E+00 1.001489E-01 6.182472E-06 -1.033671E-09

TPSPRES PRIMARY CALIBRATION SUMMARY

GAUGE #: 8255XA 176972

DATE/TIME PERFORMED: Sat Apr 3 13:23:41 2010

UNIT #: 3885TD ML4232

	Temp	G	H	I	J
0		5.154696E+06	2.938335E+02	3.950657E-06	2.347245E-09
1		-8.196073E+01	1.920028E-02	6.921582E-07	-2.459763E-11
2		5.754828E-01	-1.908005E-04	-4.372412E-09	1.635868E-13
3		-1.465665E-03	4.550461E-07	7.479652E-12	-2.836767E-16
4		2.452652E-17	8.825437E-20	-9.230265E-24	4.030033E-28
Coef Test	250.0	5.080361E+06	2.938186E+02	5.813893E-06	1.977364E-09

INSTRUMENT CONFIGURATION

Source File: /dal/a/15157/k355a2"2-hdg

AS CABLEHEADPCM POWER SUPPLY

Series : 8250EA
Mnemonic : PCM
Diameter : 1.70"
Height : 18 lbs

TELEMETRY / CCL

Series : 8248ED
Mnemonic : PCM
Diameter : 1.70"
Height : 20 lbs
Length : 4.48'

GUAN RAY

Series : 8262XA
Mnemonic : GR
Diameter : 1.70"

RPM ELECTRONICS

Series : 8281EA
Mnemonic : RPM
Diameter : 1.70"
Height : 18 lbs
Length : 4.48'

RPM G DETECTOR SECTION

Series : 8283PA
Mnemonic : RPM

34.23'

CCL MP 28.18'

GR MP 22.90'

XLS DETECTOR 13.58'

LS DETECTOR 13.16'

SS DETECTOR 12.81'

Diameter : 1.70"
Height : 41 lbs
Length : 9.40'

RPM SOURCE SECTION

Series : 8281FA
Mononic : RPM
Diameter : 1.70"
Height : 18 lbs
Length : 4.70'

TEMPERATURE / PRESSURE

Series : 8253QA
Mononic : SRPL
Diameter : 1.70"

BALL PLUG 1 11/18

TOTAL LENGTH: 34.23'
TOTAL WEIGHT: 144 lbs
MAX DIAMETER: 0"1.70"

TEMP MP : 1.88°
PRES MP : 6.08°



COMPANY VULCAN POWER COMPANY
WELL 78-36
FIELD FALLON 1
COUNTY CHURCHILL STATE NEVADA

FILE NO: 15229
API NO: 27-001-90426

LOCATION:

355836 E, 4359840 N MDM
UTM ZONE 11N, MAD 83

ELEVATIONS:

KB
DF
GL 3915 FT

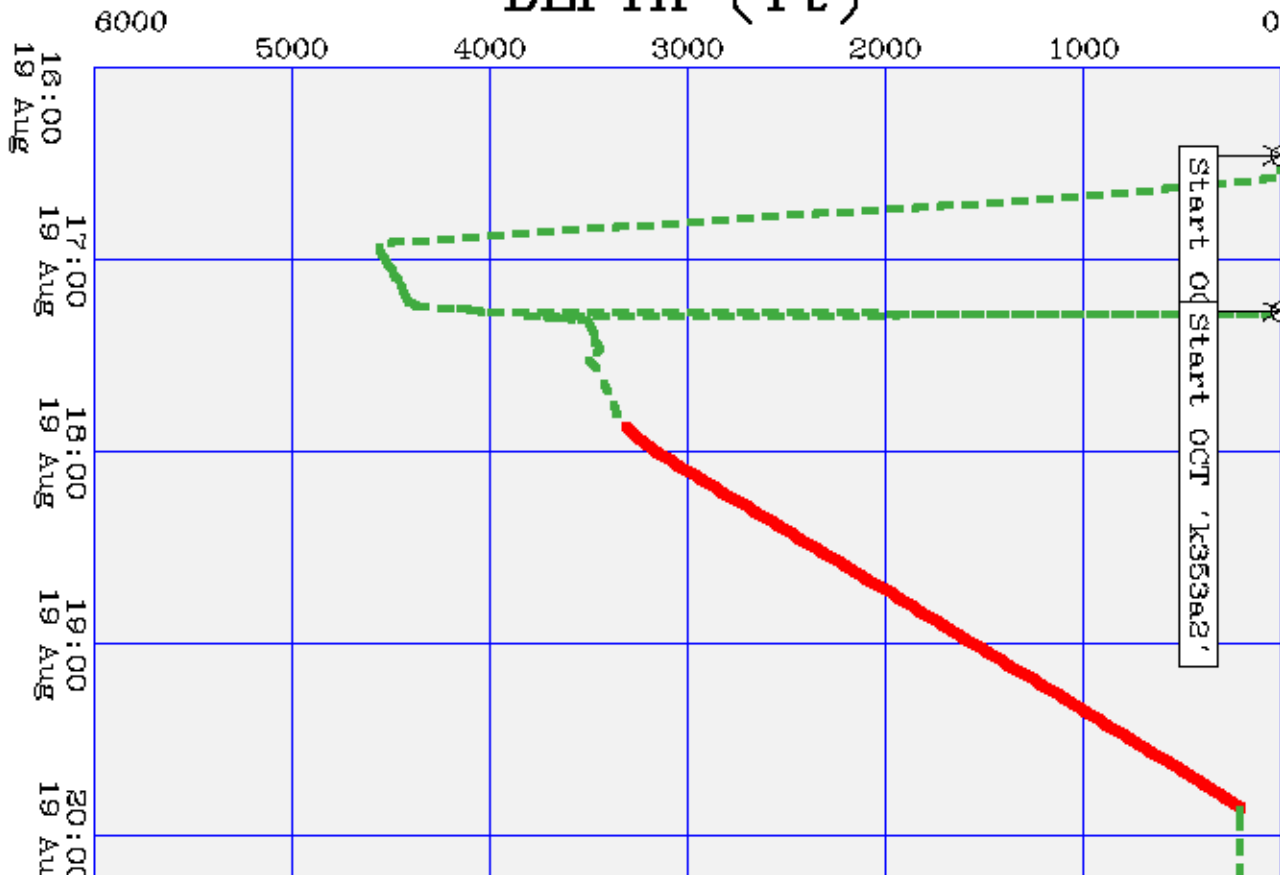
SEC 36 TWP 18N RGE 29E

DATE 19-AUG-2010

Baker Atlas



DEPTH (ft)



FILE NAME : /data/15229/rsp4232.jpg
FILE INTERVAL: 19 Aug 2010 16:27:33 to 20
PLOT INTERVAL: 19 Aug 2010 16:00:00 to 20

